



WUBR-170GN (M)

Feature

- Chipset: Ralink RT3370
- Interface: USB 4-Pin or Type A (optional)
- Wireless connection up to 150Mbps
- RF 1T1R
- 64/128-bits WEP, WPA, WPA2
- Windows 2000/XP/Vista/ Win CE/ Win 7, Linux 2.6 above, Android by request



802.11b/g/n USB Module

USB 4-Pin or Type A (optional) with Ralink RT3370 Solution, 1T1R

Superior Performance with Longer Range and Faster Speed

WUBR-170GN(M) is an 802.11g/n Wi-Fi 1x1 USB module designed specifically to enhance Wi-Fi performance and value for home gateways, set-top boxes, gaming consoles, printers. WUBR-170N(M) fully supports the features and functional compliance with IEEE 802.11g/n standard, supporting up to 150Mbps data rates. Comparing to 802.11g technology, it makes big improvement on speed and range.

Multi-Application of WUBR-170GN USB Module

50 x 21.8mm small dimension with standard USB connector is ideal for embedding into new ergonomic home gateways, set-top boxes, gaming consoles, printers, and variety of other embedded Wi-Fi products.

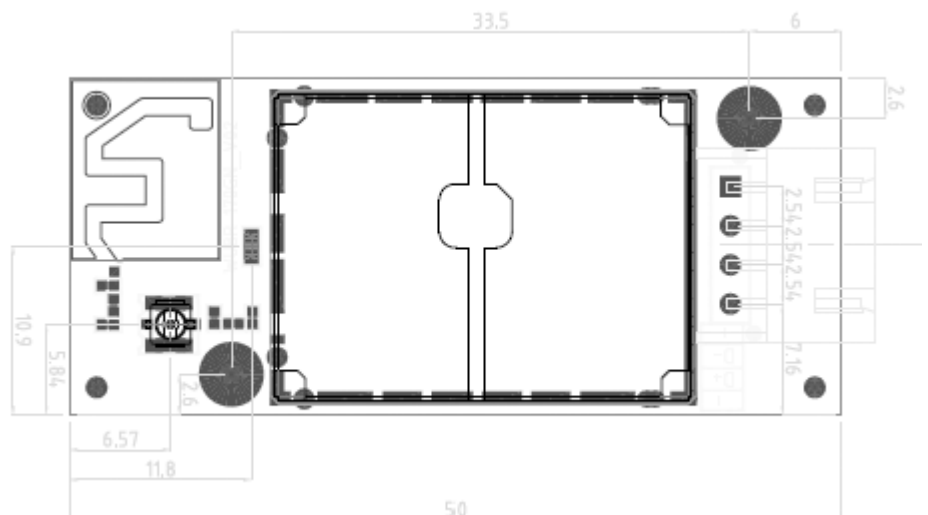
Secure Wireless Connection

WUBR-170GN(M) also features advanced WEP encryption, WPA, and WPA2 to help protect data over wireless communication without sacrificing the performance.

Application

- Industrial PC
- Networking Equipment
- Automation
- Medical Device
- POS (Point-of-Sale) System
- Gaming Machine

Mechanical Dimension

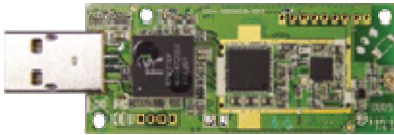




WUBR-170GN (M)

Related Product

- WUBR-125G
802.11g USB Module



Ordering Info

- WUBR-170GN(M)
802.11b/g/n USB Module

WUBR-170GN(M)	U.FL+4-Pin
WUBR-170GN(MU)	U.FL+USB Type A
WUBR-170GN(P)	Printed Antenna +USB Type A
WUBR-170GN(P4)	Printed Antenna +4-Pin

Specifications

Standard

802.11b/g/n

Chipset

Mac/BB /RF Ralink RT3370

Host Interface

USB 4-Pin or Type A (optional)

Radio

Antenna 1 x U.FL connector, 1T1R (4-Pin or USB Type A)
Printed antenna, 1T1R (4-Pin or USB Type A)

Operating Frequency b/g/n ISM Band: 2.412~2.4835GHz

Modulation 802.11b: DSSS (DBPSK, DQPSK, CCK)
802.11g: OFDM (BPSK, QPSK, 16-QAM, 64-QAM)
802.11n: OFDM (BPSK, QPSK, 16-QAM, 64-QAM)

Output Power (1TX) 802.11b: 17dBm ± 2dBm@11Mbps
802.11g: 14dBm ± 2dBm@54Mbps
802.11n HT20: 14dBm ± 2dBm@MCS7
802.11n HT40: 13dBm ± 2dBm@MCS7

Receive Sensitivity 802.11b: -88dBm ± 2dBm@11Mbps
802.11g: -71Bm ± 2dBm@54Mbps
802.11n HT20: -69dBm ± 2dBm@MCS7
802.11n HT40: -66dBm ± 2dBm@MCS7

Power consumption

Continue TX Max 350mA
Continue RX Max 150mA

Operating Voltage

DC 5V ± 5%

Environmental

Temperature Range 0 ~ 50°C (Operating) -20~70°C (Storing)
Operating Humidity (Non-Condensing) 5 ~ 90% (Operating) 5 ~ 95% (Storing)

Physical Specification

Dimensions 50mm x 21.8mm x 9.25mm
Weight 9g

Software

Driver Windows 2000/ XP/ Vista/ Win CE/ Win 7,
Linux 2.6 above, Android by request
Security 64/128-bits WEP, WPA, WPA2