

# TSW210



TSW210 360° VIEW

## UNMANAGED GIGABIT ETHERNET SWITCH WITH SFP

// The TSW210 is an unmanaged industrial switch for centralizing your resources.

// Equipped with 2 SFP ports for long-range fiberoptic communication and 8 Gigabit Ethernet ports with of up to 1000 Mbps download/upload speed.

// Durable, rugged aluminum housing with DIN rail and surface mounting options make the TSW210 perfect for industrial settings.

// 2-pin industrial DC power socket with an input voltage range of 7-57 VDC.



### ETHERNET

8 x Gigabit Ethernet with speeds up to 1000 Mbps

### PLUG-N-PLAY

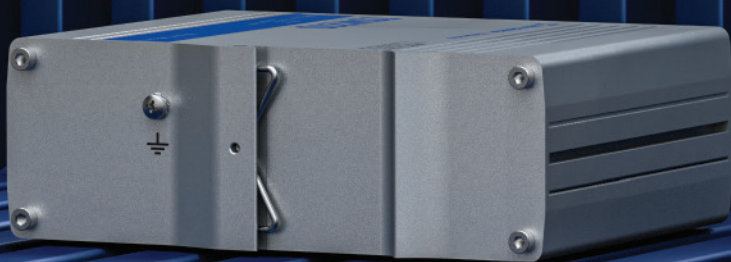
No additional configuration needed

### MOUNTING

DIN rail and surface mounting options

### SFP

SFP port for long-range Fiber-optic communication



# KEY FEATURES

## HARDWARE

Power connector	2-pin industrial DC power socket
Input voltage range	7-57 VDC
Power consumption	Idle: 1.03 W, Max: 3.71W
Ethernet	8 x 10/100/1000 Mbps Ethernet ports
SFP	2 x SFP ports for Optical interfaces
Status LEDs	16 x Ethernet, 1 x Power, 2 x SFP activity
Ingress protection rating	IP30
Operating temperature	-40 °C to 75 °C
Housing	Aluminum housing with wall or DIN rail mounting options and grounding capability
Dimensions	132 x 44.2 x 95.1 mm
Weight	500 g
Installation	Desktop, wall or DIN rail mountable (additional kit needed)

## PERFORMANCE SPECIFICATIONS

Bandwidth	20 Gbps
Packet buffer	128 KB
Jumbo frame support	9216 bytes
MAC address table size	2K entries
Auto MDI/MDI-X Cable Detection	Yes

FRONT VIEW

BACK VIEW

