

# CTX 5800™

ACCESSORIES FOR CTX 5800 OUT-OF-GAUGE

BAGGAGE SCREENING APPLICATIONS



The CTX 5800 is Morpho Detection's solution to screening out-of-gauge baggage that plagues most baggage handling systems. With the capability to manage and screen odd-sized items such as golf bags, skis, surfboards and more, the CTX 5800 enables security personnel to increase throughput and decrease screen time, all without having to use additional handheld devices to screen baggage.

## Benefits

- TSA-certified
- Smallest footprint CT system with over 400 bph\* currently available
- 85 cm (33.5 in.) Bore
- Higher efficiency screening with belt speed of 0.46 ft./s (0.14 m/s)
- Multiple integration methods and multiplexing network capability
- 220V AC 30 Amp single phase power
- Internal UPS for power conditioning and continuous operations
- Configurable system options
- Unprecedented high-resolution 3D images through Morpho Detection's Clarity Data Acquisition System (DAS)
- Simple installation
- Lower false alarm rate

\* Throughput assumes integrated environment using an average of 28 in. (71.1 cm) bags and 12 in. (30.5 cm) bag spacing.

## Multiple Configurations

The CTX 5800 in its standard configuration can accept bags up to 94.5 in. (2.4 m) long but can be configured to take even longer bags. This limitation is for bag jam detection purposes only and can be increased such that the machine can accept any desired maximum bag length.

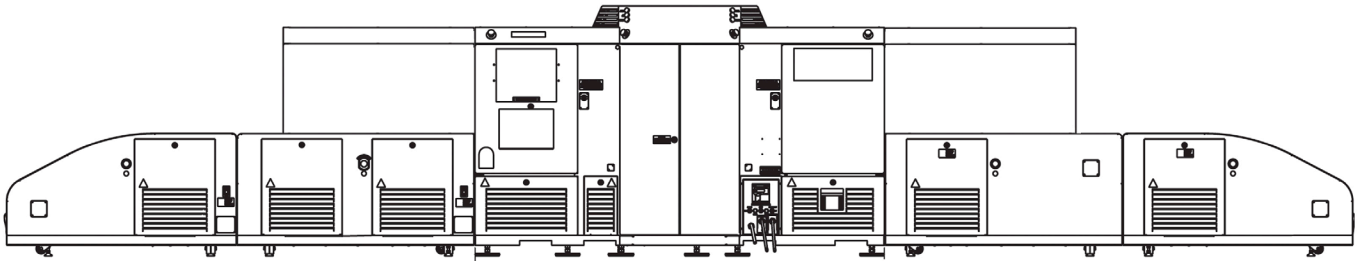
## Ease of Use

Since the CTX 5800 is based on the same software infrastructure as the CTX 9800 DSi™, previously trained operators have a seamless transition to the CTX 5800 user interface and operations. As well, when working through Morpho Detection's MUXv2™ next-generation multiplexing solution, out-of-gauge system screeners can remotely view images from any CTX 5800 or CTX 9x00 DSi Series system within the network.

## Clarity

The Clarity Data Acquisition System (DAS) is the latest evolution of computed tomography (CT) technology for Morpho Detection's CTX products. Producing unprecedented high-quality 3D images, Clarity brings together for the first time Morpho Detection's automated explosives detection expertise with 3D CT technology for high-resolution medical CT scanners. The combination of these two capabilities generates high-resolution 3D images that afford finely-detailed views of baggage contents and precise algorithmic calculations, providing an increased ability to identify threats, reduce false alarm rates and lower operational costs.

Figure 1. CTX 5800 shown configured with Incline Infeed Conveyor, Flat Conveyors, Decline Outfeed Conveyor and Long Bag Extension.



### Flat Infeed / Exit Conveyor

Dimensions (W x L x H)	35.9 in. x 58 in. x 29.8 in.; belt level - 24 in. 912 mm x 1473 mm x 759 mm; belt level - 610 mm
Weight	435 lbs. (197 kg)
Power	Add - 220 VAC 50/60 Hz / powered by CTX
Safety	UL, CE

### Incline Infeed Conveyor / Decline Outfeed Conveyor

Dimensions (W x L x H)	33.5 in. x 57.1 in. 30 in.; belt level - 24 in. to 10.5 in. 850 mm x 145 mm x 760 mm; belt level - 610 mm to 267 mm
Weight	408 lbs. (185 kg)
Power	220 VAC 50/60 Hz / Powered by CTX
Safety	UL, CE

### Exit Slide

Dimensions (W x L x H)	33.5 in. x 67 in. x 30 in. 850 mm x 1700 mm x 760 mm Bags exiting slide to a padded stop - 7 in. (190 mm) from floor
Weight	260 lbs. (117 kg)
Power	Non-powered

### Riser

Dimensions (W x L x H)	49.5 in. x 100.3 in. x 14.8 in. 1258 mm x 2550 mm x 375 mm Platform to rise CTX from standard 24 in. (610 mm) to 35 in. (890 mm)
Weight	560 lbs. (254 kg)
Power	Non-powered

### Long Bag Extension

Dimensions (W x L x H)	38 in. x 47.7 in. x 31.6 in. 965 mm x 1212 mm x 802 mm
Weight	170 lbs. (77 kg)
Power	Non-powered

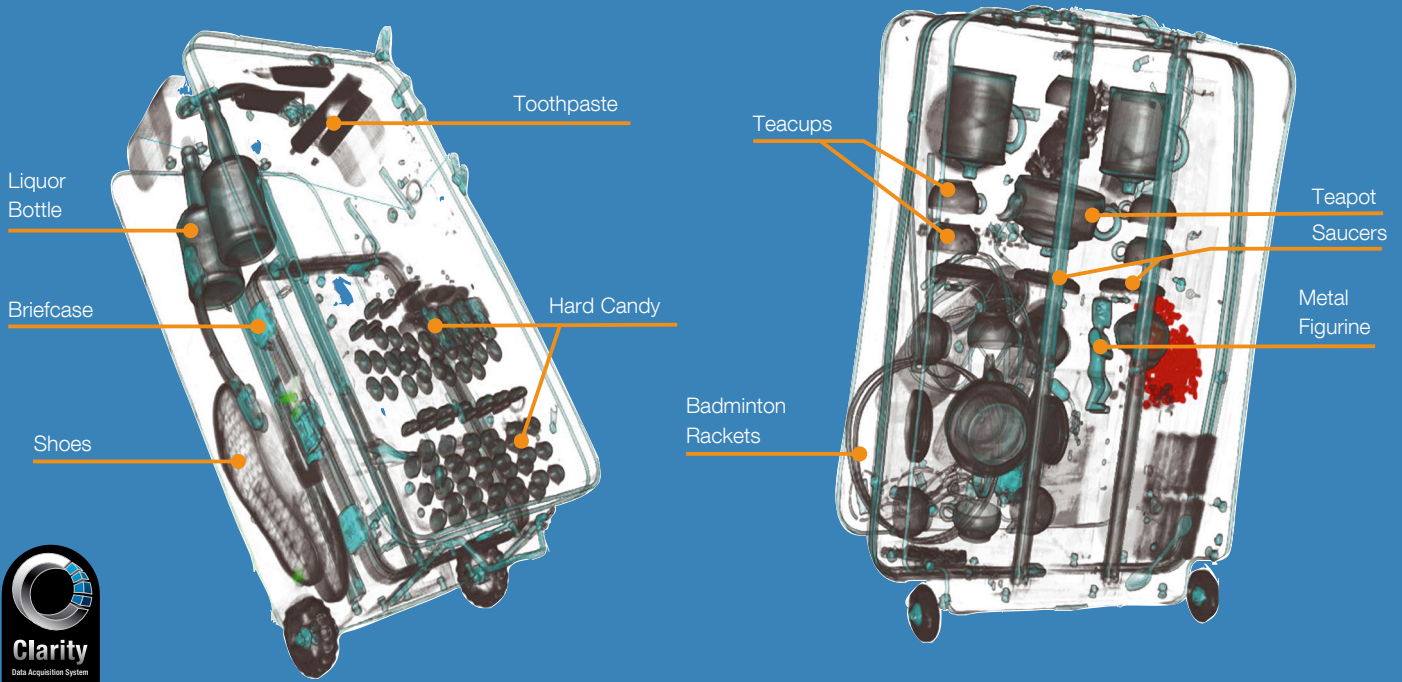


רח' אודם 14, ת.ד. 7042 פ"ת

טל: 03-9243352 ▪ פקס: 03-9243358

www.hypertek.co.il ▪ sales@hypertek.co.il

Figure 2. Bag views captured using Clarity shown below



**Visual Decision Indicator (VDI)**

<b>Dimensions ( W x L x H )</b>	12.9 in. x 19.6 in. 330 mm x 500 mm
<b>Power</b>	Powered by scanner
<b>Notes</b>	VDI is an assistant to operators of the CTX 5800 to clearly identify the CTX decision of the object being scanned as it exists the scanner. The decisions are visually demonstrated in the following manner: Green - Clear Red - Suspect Blue - Pending White - Unknown

**Vertical Viewing Station**

<b>Dimensions ( Height )</b>	66.2 in. 681.2 mm
<b>Weight</b>	Without electronics: 120 lbs. (54 kg); With electronics: 147 lbs. (66 kg)

**Infeed Barcode Reader**

<b>Dimensions ( W x L x H )</b>	2.76 in. x 2.76 in. x 5.51 in. 70 mm x 70 mm x 140 mm
<b>Weight</b>	3 lbs. (14 kg)

**Programmable Logic Controller**

<b>Communication Cards</b>	ControlNet, Profibus DP *Modbus TCP IP (coming soon)
----------------------------	---

**480v Transformer**

<b>Power</b>	Converts facility 3 phase power down to single phase 220 VAC stream (CTX 5800)
--------------	--

**TIP Library**

IED bags (operator tester)
----------------------------

**Elevated Temperature Kit**

<b>Environments</b>	> 32°C < 45°C
<b>Dimensions ( W x L x H )</b>	19.0 in. x 29.0 in. x 47.0 in. 482.6 mm x 736.6 mm 1193.8 mm
<b>Weight</b>	235.0 lbs. (106.6 kg)

## KEY MISSIONS, KEY TECHNOLOGIES, KEY TALENTS