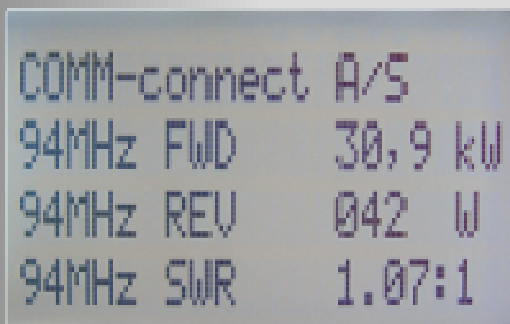
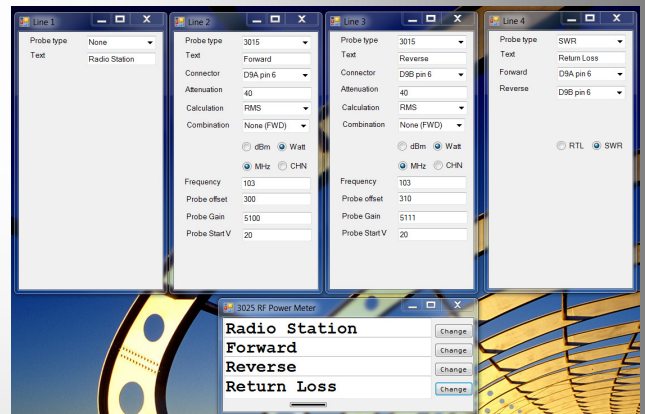


USB Broadcast Power Monitor

Type 3025

The COMM-connect Entry Level Broadcast Power Monitor type 3025 can control four external RF Measuring heads. The high dynamic range with external couplers and RF measuring heads cover from 1W to 1MW. Equipped with the RMS Probes the Power conversion algorithms handles multi carrier, multi mode signals. With the 3026 Diode base probe the power readout gives good repeatable results. The power readout is auto scaled and VSWR will be calculated between the two probes. The COMM-connect Entry Level Power Monitor gives a number of application to monitor and control the last part of your RF network installation from transmitters to the antenna.



Applications / Features:

- Site monitoring
- Direct on-site output reading
- Cost effective
- USB Interface
- USB management tool
- Alarm output

USB Broadcast Power Monitor

Type 3025

Functions:

- Measure Forward and Reflected Power
- Measure correct RMS Power
- Calculate VSWR
- 4-line display (configurable)
- Display Power and VSWR
- Cost effective
- High accuracy
- Digital out
- Opto out
- USB manager tool

Specifications:

- Frequency range: 10MHz til 2500MHz
- VSWR range: 1:1 - 9:1
- Power range: 1 W to 10 MW
- Max. probes: 4
- Power meas. modes: RMS, Peak sync, Frame Average
- Configuration: USB Manager tool
- Digital output type: Open collector
- Digital input type: TTL 5 V
- Enclosure: Aluminium casing
- Power supply: 85 V to 264 V AC
- Temperature range: 0° C to 50° C

