

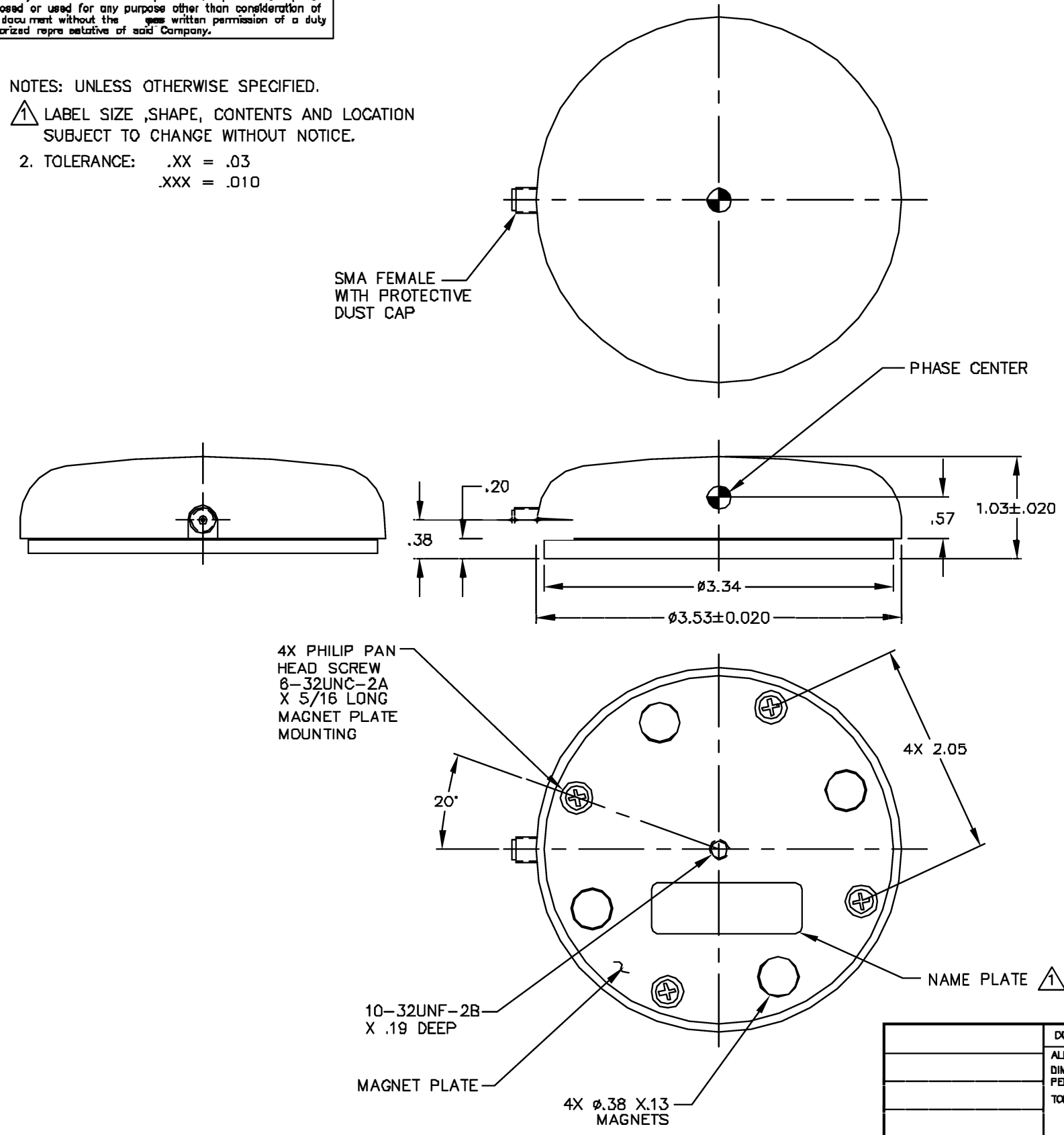
PROPRIETARY NOTICE: This document contains proprietary information of AAT Inc. Neither the document nor said proprietary information shall be published, reproduced, copied, disclosed or used for any purpose other than consideration of this document without the written permission of a duly authorized representative of said Company.

| REVISIONS | | | |
|-----------|--------------|----------|----------|
| SYM | DESCRIPTION | DATE | APPROVED |
| C | SEE ECO 5275 | 10/02/02 | |

NOTES: UNLESS OTHERWISE SPECIFIED.
 1. LABEL SIZE, SHAPE, CONTENTS AND LOCATION SUBJECT TO CHANGE WITHOUT NOTICE.
 2. TOLERANCE: .XX = .03
 .XXX = .010

SPECIFICATION:

FREQUENCY: 1575 MHz ±10 MHz & 1227 MHz ±10 MHz
 POLARIZATION: RIGHT HAND CIRCULAR
 AXIAL RATIO: 2.5 dB MAX
 RADIATION COVERAGE: 4.0 dBic $\theta = 0^\circ$
 -1.0 dBic $0^\circ < \theta < 75^\circ$
 -2.5 dBic $75^\circ \leq \theta < 80^\circ$
 -4.5 dBic $80^\circ \leq \theta < 85^\circ$
 -7.5 dBic $\theta = 90^\circ$
 AMPLIFIER:
 GAIN: 24.5 dB TO 30.5 dB
 NOISE FIGURE: 2.5 dB MAX
 VOLTAGE: +2.8 TO +5.0 VDC
 LOAD CURRENT: 30 TO 60 MILLIAM (mA)
 IMPEDANCE: 50 OHM
 VSWR: ≤2.0:1
 BAND REJECTION: 35 dB
 POWER HANDLING: 1 WATT
 CONNECTOR: SMA FEMALE
 WEIGHT: 10.5 OUNCES
 MATERIAL: A380 ALUMINUM ALLOY CASTING
 ABS HIGH TEMP., HIGH IMPACT RADOME
 FINISH: RADOME COLOR, LUSTERLESS BLACK
 ALTITUDE: 35,000'
 OPERATING TEMP: -40°C TO +70°C



03-9243358 פקס ▪ 03-9243352 :70 ▪ רח' אודם 14, ת.ד. 7042 פ"ת ▪
 www.hypertech.co.il ▪ sales@hypertech.co.il



| | | | | | | | |
|---|-----------------------------------|--|----------------------------------|------------|--------------------|-----------------------------|--------------|
| DO NOT SCALE THIS DRAWING ALL DIMENSIONS ARE IN INCHES DIMENSIONING & TOLERANCING PER ANSI Y14.5M-1982 TOLERANCES: .XX = ±.03 .XXX = ±.010 FRACT = ±1/32 ANG. = ±1/2° SURFACE ROUGHNESS PER ANSI B46.1 REMOVE BURRS AND BREAK SHARP EDGES: PART TO BE CLEAN AND OIL FREE | DRAWN T. JEENSALUTE 12/6/96 | | TITLE L1/L2 GPS ANTENNA | | | | |
| | CHECKED D. LEVY 6/18/97 | | ENGR T. JEENSALUTE 6/18/97 | SIZE B | CAGE CODE OUVG2 | DRAWING NO. AT2775-12 | REV C |
| | Q.A. B. RUBENI 6/18/97 | | APPROVED G. SHAR 02/09/00 | SCALE NONE | | G:\CAD\AT2775\12\AT2775-12C | SHEET 1 OF 1 |
| | USED ON | | DRAWN IN MCAD | | | | |