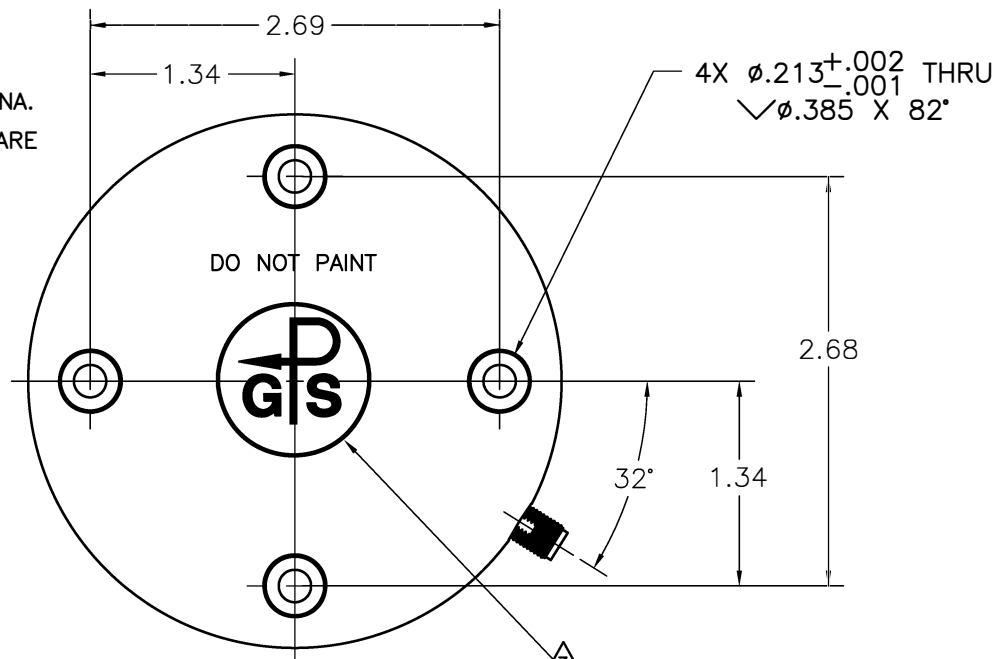


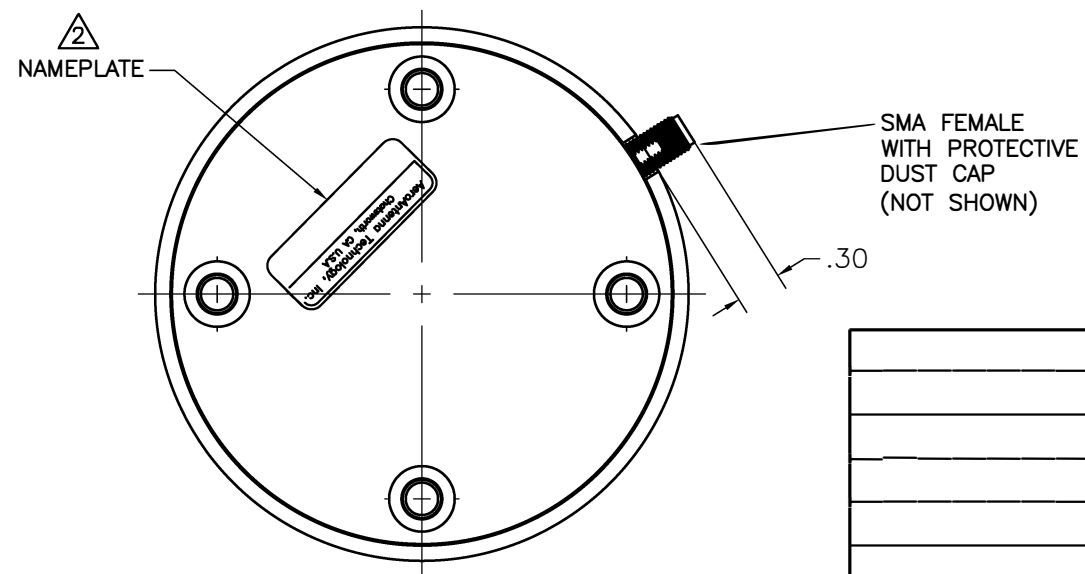
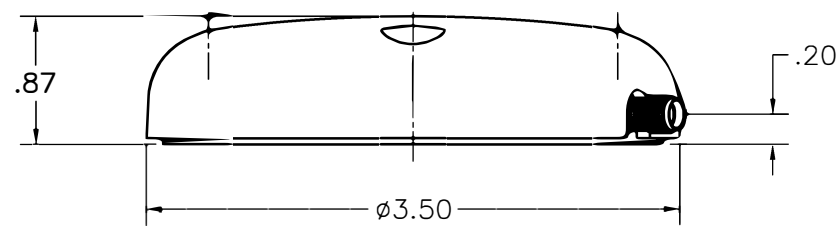
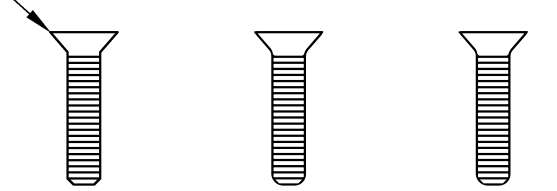
| REVISIONS | | | |
|-----------|---------------------------------|----------|----------|
| SYM | DESCRIPTION | DATE | APPROVED |
| A | PRODUCTION RELEASE PER ECO 9735 | 04/28/11 | |

NOTES: UNLESS OTHERWISE SPECIFIED.

- 1 MOUNTING SCREWS, SUPPLIED BY AEROANTENNA.
- 2 SIZE, SHAPE AND CONTENTS OF NAMEPLATE ARE SUBJECT TO CHANGE WITHOUT NOTICE.
- 3 LOGO OPTIONAL.
- 4. TOLERANCE: .XX = .03
.XXX = .010



1
4X MOUNTING SCREW
10-32 UNF-2A X 1.00
CROSS RECESSED
FLAT HEAD, SST



SPECIFICATION:

FREQUENCY: 1575 MHz ±10 MHz & 1227 MHz ±10 MHz
 POLARIZATION: RIGHT HAND CIRCULAR
 AXIAL RATIO: 2.5 dB MAX @ BORESIGHT
 RADIATION COVERAGE: 4.0 dBic @ θ = 0°
 -1.0 dBic 0° < θ < 75°
 -2.5 dBic 75° ≤ θ < 80°
 -4.5 dBic 80° ≤ θ < 85°
 -7.5 dBic θ = 90°
 AMPLIFIER:
 GAIN: 26 dB
 NOISE FIGURE: 2.5 dB MAX
 VOLTAGE: 3.3 VDC
 LOAD CURRENT: 60 milliamps (mA) MAX
 IMPEDANCE: 50 OHM
 VSWR: ≤2.0:1
 POWER HANDLING: 1 WATT
 CONNECTOR: SMA FEMALE
 WEIGHT: 7.6 OUNCES
 MATERIAL: 6061-T6 ALUMINUM ALLOY BASE PLATE
 HIGH IMPACT RADOME
 FINISH: RADOME COLOR, OLIVE
 ALTITUDE: 35,000'
 OPERATING TEMP: -47°C TO +72°C
 NONOPERATING TEMP: -52°C TO +72°C

AT2775-1120-SMAF-000-3.3-26-NM

COLOR:
O = OLIVE
MAGNET
NM = NO MAGNET
CONNECTOR
SMAF = SMA FEMALE
GAIN (± 2 db)
26 = 26dB (60mA)
CABLE LENGTH
*000 = IN INCHES
VOLTAGE
3.3 = 3.3 VDC

* = OPTION NOT AVAILABLE WITH THIS MODEL



03-9243358 :פקס ▪ 03-9243352 :טל ▪ 7042 פ"ת .ת.ד. 14, אודם
www.hypertech.co.il ▪ sales@hypertech.co.il



| | | | |
|--|----------|--------------|----------|
| DO NOT SCALE THIS DRAWING | DRAWN | V. GRINEVICH | 03/28/11 |
| REMOVE BURRS AND BREAK SHARP EDGES | CHECKED | N. ISTRATE | 01/08/12 |
| PART TO BE CLEAN AND OIL FREE | ENGR | N. ISTRATE | 03/28/11 |
| ALL DIMENSIONS ARE IN INCHES DIMENSIONING & TOLERANCING PER ASME Y14.5M-1994 | MFG | DANNY LEVY | 01/08/12 |
| TOLERANCES: -XX ±.01 FRACT = ±1/32 -XXX ±.005 ANG. = ±1/2° | Q.A. | B. RUBENI | 01/08/12 |
| ✓ SURFACE ROUGHNESS MACHINED PARTS V63 MOLDED PARTS V32 | APPROVED | YOUSI Z. | 01/09/12 |
| HOLE DIA. TOLERANCE | DRAWN IN | CAD | |
| .0135 - .125 +.004/-0.001 | | | |
| .126 - .250 +.005/-0.001 | | | |
| .251 - .500 +.008/-0.001 | | | |
| .501 - .750 +.008/-0.001 | | | |

AeroAntenna Technology Inc
AS9100 CERTIFIED CO.

TITLE: L1/L2 GPS ANTENNA

SIZE: B CAGE CODE: OUVG2 DRAWING NO.: AT2775-112 REV: A

SCALE: NONE I:\CAD\AT2775\112\AT2775-112_A SHEET 1 OF 1