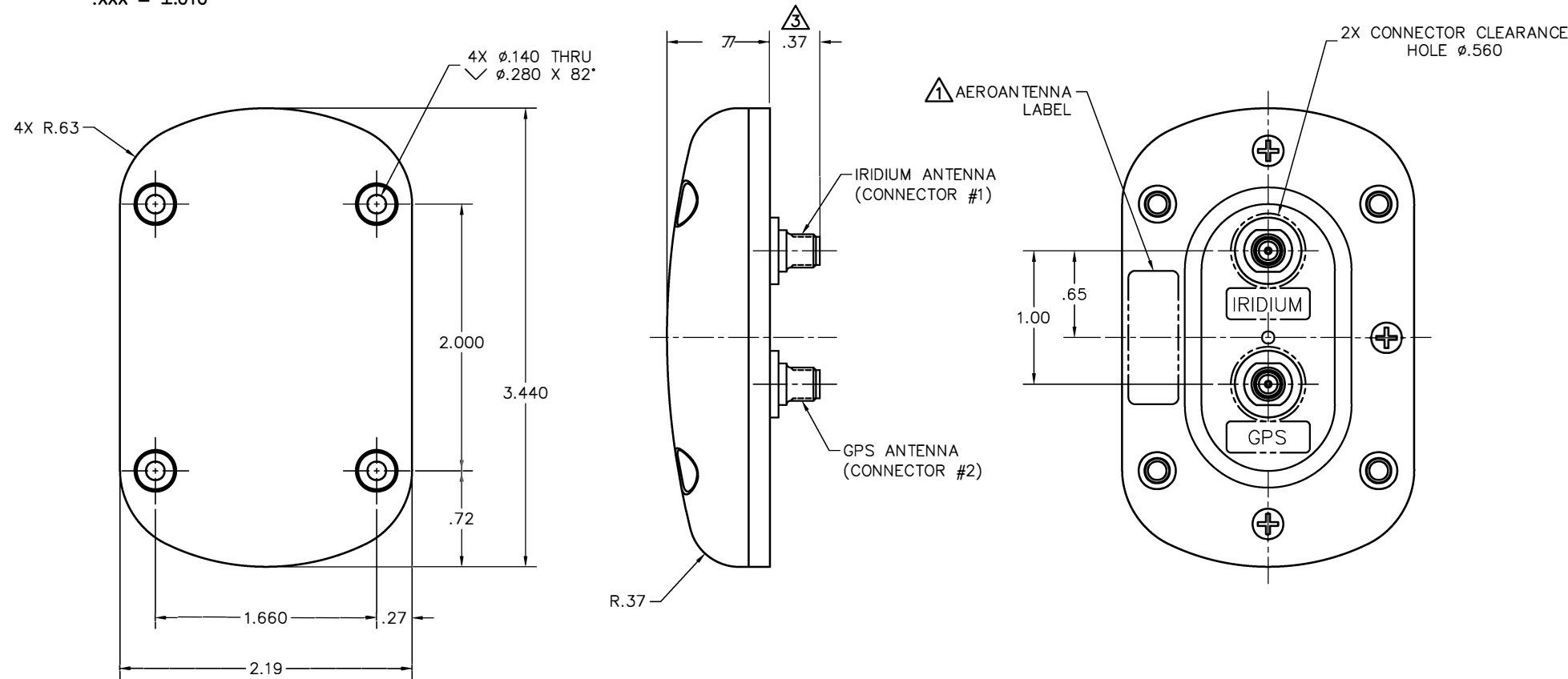


PROPRIETARY NOTICE: This document contains proprietary information of AAT Inc. neither the document nor said proprietary information shall be published, reproduced, copied, disclosed or used for any purpose other than consideration of this document without the express written permission of a duly authorized representative of said Company.

REVISIONS			
SYM	DESCRIPTION	DATE	APPROVED
A	RELEASE PER ECO8742	04/23/09	

NOTES: UNLESS OTHERWISE SPECIFIED.

- 1 SIZE, SHAPE, AND CONTENTS OF NAME PLATE ARE SUBJECT TO CHANGE WITHOUT NOTICE.
- 2 MOUNTING SCREWS AND O-RING SUPPLIED BY AEROANTENNA.
- 3 DIMENSIONS FOR SMAF CONNECTOR.
- 4 DIMENSIONS FOR TNCF CONNECTOR.
- 5. TOLERANCE: .XX = ±.03  
.XXX = ±.010



**SPECIFICATION:**

FREQUENCY: 1621 ±5 MHz  
1575 ±5 MHz

POLARIZATION: RIGHT HAND CIRCULAR

AXIAL RATIO: 3 dB MAX

RADIATION COVERAGE: IRIIDIUM

ELEVATION ANGLE: 0°<θ<10° GAIN: -2.5 dBic min  
10°<θ<90° 0 dBic min

GPS

ELEVATION ANGLE: 0°<θ<10° GAIN: -7.5 dBic min  
10°<θ<20° -5.5 dBic min  
20°<θ<30° -3.5 dBic min  
θ>30° -2.5 dBic min

AMPLIFIER: IRIIDIUM: PASSIVE  
GPS L1: 26 dB (35 mA)

VOLTAGE: IRIIDIUM: PASSIVE  
GPS L1: 3 VDC

NOISE FIGURE: 2.5 dB MAX

IMPEDANCE: 50 OHMS

VSWR: ≤2.0:1

POWER HANDLING: 10 WATTS

CONNECTOR: SPECIFY

WEIGHT: 4.50 OZ.

OPERATING TEMP: -55°C TO +85°C



**PART NO. DESIGNATION:**  
AT1621-262XXX-XXXX-XXXX-XXX-XX-XX-XX

CUSTOMER ID (IF APPLICABLE)

COLOR  
W = WHITE  
B = BLACK  
O = OLIVE DRAB

CONNECTOR #1  
SMAF = SMA FEMALE  
TNCF = TNC FEMALE

CONNECTOR #2  
SMAF = SMA FEMALE  
TNCF = TNC FEMALE

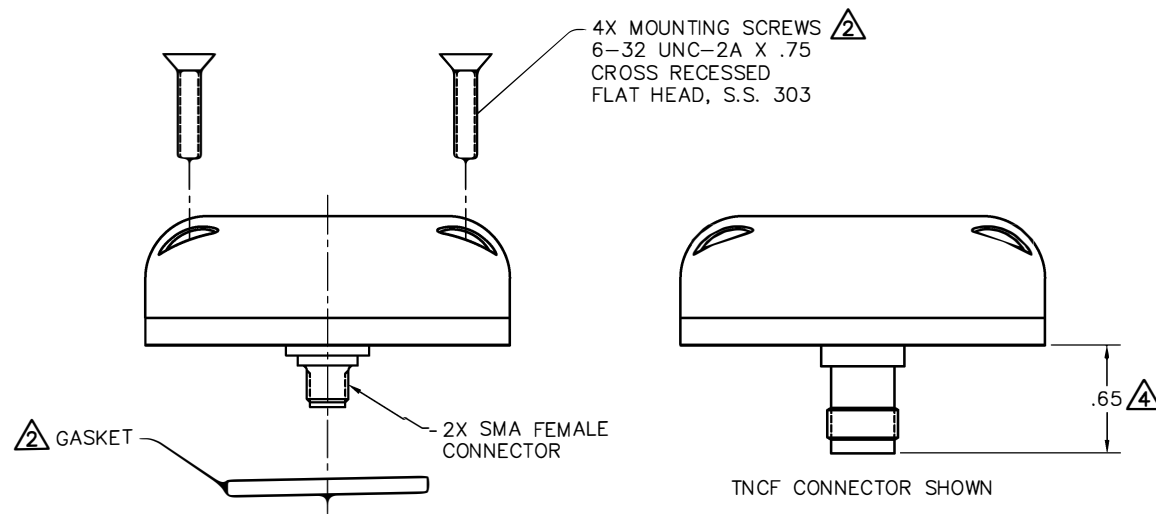
MAGNET  
NM = NO MAGNET

GAIN (± 2 dB)  
26 = 26 dB (35 mA)

VOLTAGE  
03 = 3 VDC

CABLE LENGTH  
000 = IN INCHES

STANDARD MODEL= AT1621-262W-SMAF-SMAF-000-03-26-NM



DO NOT SCALE THIS DRAWING	DRAWN	09/01/06
REMOVE BURRS AND BREAK SHARP EDGES: PART TO BE CLEAN AND OIL FREE	A. DEVERA	
ALL DIMENSIONS ARE IN INCHES DIMENSIONING & TOLERANCING PER ASME Y14.5M-1994	CHECKED	
TOLERANCES: XX ±.01 FRACT = ±1/32 XXX ±.005 ANG. = ±1/2°	ENGR	
✓ SURFACE ROUGHNESS MACHINED PARTS V63 MOLDED PARTS V32	MFG	
HOLE DIA. TOLERANCE	Q.A.	
.0135 - .125 ±.004 -.001	APPROVED	
.126 - .250 +.005 -.001		
.251 - .500 +.008 -.001	DRAWN IN	ACAD
.501 - .750 +.008 -.001		

**AeroAntenna Technology Inc**

TITLE: IRIIDIUM/GPS L1 ANTENNA

SIZE	CAGE CODE	DRAWING NO.	REV
B	OUVG2	AT1621-262	A

SCALE: NONE I: \CAD\AT1621\ -262\AT1621-262\_A SHEET 1 OF 1

רח' אודם 14, ת.ד. 7042 פ"ת • 03-9243352 :טל • 03-9243358 :פקס  
www.hypertech.co.il • sales@hypertech.co.il



NEXT ASSY