

REVISIONS			
SYM	DESCRIPTION	DATE	APPROVED
D	UPDATE PER ECO 9569	01/03/11	
ADDED WATERPROOF: IPX7 TO SPECS.			

NOTES: UNLESS OTHERWISE SPECIFIED.

1. SIZE, SHAPE, AND CONTENTS OF NAME PLATE ARE SUBJECT TO CHANGE WITHOUT NOTICE.

2. SCREWS AND TBD SUPPLIED BY AEROANTENNA.

3. TOLERANCE: .XX = ±.03  
.XXX = ±.010

**SPECIFICATION:**

FREQUENCY: 1621 ±5 MHz  
1575 ±5 MHz

POLARIZATION: RIGHT HAND CIRCULAR

AXIAL RATIO: 3 dB MAX

RADIATION COVERAGE: IRIDIUM  
ELEVATION ANGLE: 0°<θ<10° GAIN: -2.5 dBic min  
10°<θ<90° 0 dBic min

GPS  
ELEVATION ANGLE: 0°<θ<10° GAIN: -7.5 dBic min  
10°<θ<20° -5.5 dBic min  
20°<θ<30° -3.5 dBic min  
θ>30° -2.5 dBic min

AMPLIFIER: IRIDIUM: PASSIVE  
GPS L1: 26 dB (35 mA)

GAIN: IRIDIUM: PASSIVE  
GPS L1: 3 VDC

VOLTAGE: IRIDIUM: PASSIVE  
GPS L1: 3 VDC

NOISE FIGURE: 2.5 dB MAX

IMPEDANCE: 50 OHMS

VSWR: ≤2.0:1

POWER HANDLING: 10 WATTS

CONNECTOR: SPECIFY

WEIGHT: 4.50 OZ.

OPERATING TEMP: -40°C TO +71°C

WATERPROOF: IPX7



**PART NO. DESIGNATION:**  
AT1621-162X-XXXX-XXXX-XXX-XX-XX-XX

COLOR: W = WHITE, B = BLACK, O = OLIVE DRAB

CONNECTOR #1: SMAF = SMA FEMALE

CONNECTOR #2: SMAF = SMA FEMALE

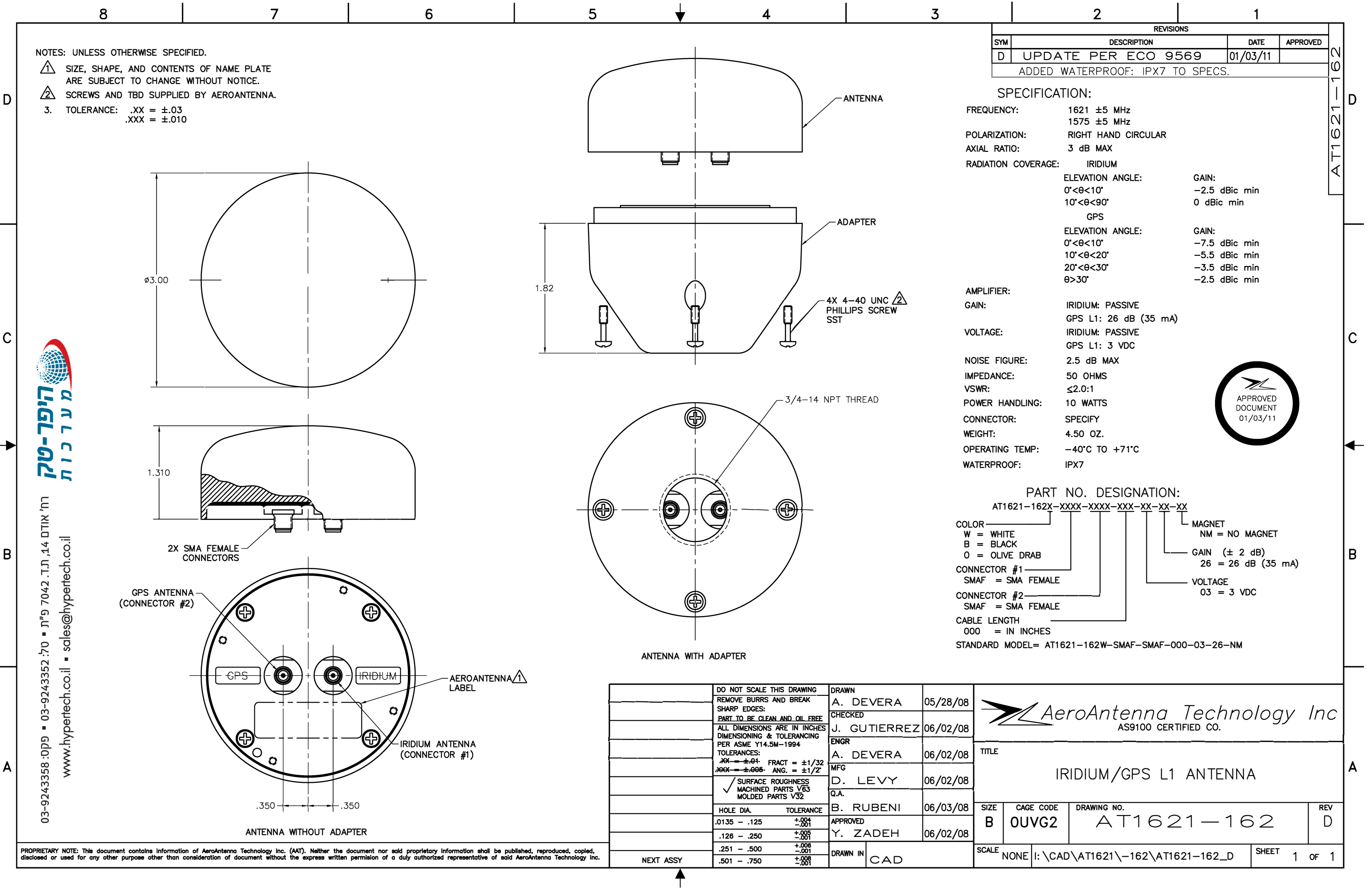
CABLE LENGTH: 000 = IN INCHES

STANDARD MODEL = AT1621-162W-SMAF-SMAF-000-03-26-NM

MAGNET: NM = NO MAGNET

GAIN (± 2 dB): 26 = 26 dB (35 mA)

VOLTAGE: 03 = 3 VDC



03-9243358 :0799 ▪ 03-9243352 :70 ▪ 7"9 7042 .T.T. ,14 םתיק'ת  
www.hypertech.co.il ▪ sales@hypertech.co.il

DO NOT SCALE THIS DRAWING	DRAWN	A. DEVERA	05/28/08
REMOVE BURRS AND BREAK SHARP EDGES:	CHECKED	J. GUTIERREZ	06/02/08
PART TO BE CLEAN AND OIL FREE	ENGR	A. DEVERA	06/02/08
ALL DIMENSIONS ARE IN INCHES DIMENSIONING & TOLERANCING PER ASME Y14.5M-1994	MFG	D. LEVY	06/02/08
TOLERANCES:	Q.A.	B. RUBENI	06/03/08
XX = ±.01 FRACT = ±1/32	APPROVED	Y. ZADEH	06/02/08
XXX = ±.005 ANG. = ±1/2°	DRAWN IN	CAD	
✓ SURFACE ROUGHNESS MACHINED PARTS V63 MOLDED PARTS V32			
HOLE DIA. TOLERANCE			
.0135 - .125 +.001/-001			
.126 - .250 +.005/-001			
.251 - .500 +.008/-001			
.501 - .750 +.008/-001			

**AeroAntenna Technology Inc**  
AS9100 CERTIFIED CO.

TITLE: IRIDIUM/GPS L1 ANTENNA

SIZE: B CAGE CODE: OUVG2 DRAWING NO.: AT1621-162 REV: D

SCALE: NONE I:\CAD\AT1621\162\AT1621-162\_D SHEET 1 OF 1

PROPRIETARY NOTE: This document contains information of AeroAntenna Technology Inc. (AAT). Neither the document nor said proprietary information shall be published, reproduced, copied, disclosed or used for any other purpose other than consideration of document without the express written permission of a duly authorized representative of said AeroAntenna Technology Inc.