

## AC Surge Protector SPD I2R DIN-Rail 230/400 Vac 3-Phase Wye 60 A MOV, GDT 150 kA

**1104-15-106**  
**I2R LSA 230W-150/20**



### Features

- Extremely High Capacity Spark Gap Technology
- SASD and MOV Protection Options
- Visual Suppression Status Indicator
- Dry Contact Remote Annunciation Terminals
- Replaceable Suppression Modules
- DIN-Rail Mount

### Applications

- Electrical Panelboards
- Industrial Automation
- Communications Base Stations
- IT & Data Centers
- Switchgear
- Motor Control Centers
- Automatic Transfer Switches
- Wastewater Treatment
- Oil & Gas
- LED Lighting
- Schools
- Hospitals

### Description

AC surge protector (also known as SPD or lightning protector) 1104-15-106 from Transtector is a DIN-Rail style SPD that utilizes state of the art MOV / GDT technology to protect critical equipment that operates on a 230/400 Vac 3-Phase Wye electrical service. This surge protector provides effective protection against electrical transient surges that are generated both by external lightning events and by internal switching events and supports long-term system reliability by safely shunting high amounts of transient energy while maintaining a very low clamping voltage. Transtector AC surge protectors are available in stock with same day shipping.

### Electrical Specifications

Description	Minimum	Typical	Maximum	Units
Service Voltages		230/400		Vac
Service Type		3-Phase Wye		
Current Rating			60	A
Maximum Continuous Operating Voltage (MCOV)				
L - N			320	Vac
N - G			260	Vac

### Surge Protection Specification

Description	Minimum	Typical	Maximum	Units
Surge Protection Technology		MOV, GDT		
Protection Modes		L-L, L-N, L-G		

Click the following link (or enter part number in "SEARCH" on website) to obtain additional part information including price, inventory and certifications:  
[AC Surge Protector SPD I2R DIN-Rail 230/400 Vac 3-Phase Wye 60 A MOV, GDT 150 kA 1104-15-106](#)

AC Surge Protector SPD I2R DIN-Rail 230/400 Vac  
3-Phase Wye 60 A MOV, GDT 150 kA

**1104-15-106**  
I2R LSA 230W-150/20



8/20µs Surge Current		150	kA
Nominal Discharge Current Rating (In)	40		kA
Vpl 8/20µs L-N	1,500 @ 40kA		Vpk
Response Time		25	ns

**Mechanical Specifications**

**Size**

Height	2.6 in	[66.04 mm]
Width	4.96 in	[125.98 mm]
Depth	3.54 in	[89.92 mm]
Weight	2.283 lbs	[1.04 kg]
Housing Material and Plating	Plastic	

**Environmental Specifications**

Temperature Range (Operational)	-40 to +70 deg C
Humidity	95% non-condensing

**Installation**

Mount Type	DIN Rail
------------	----------

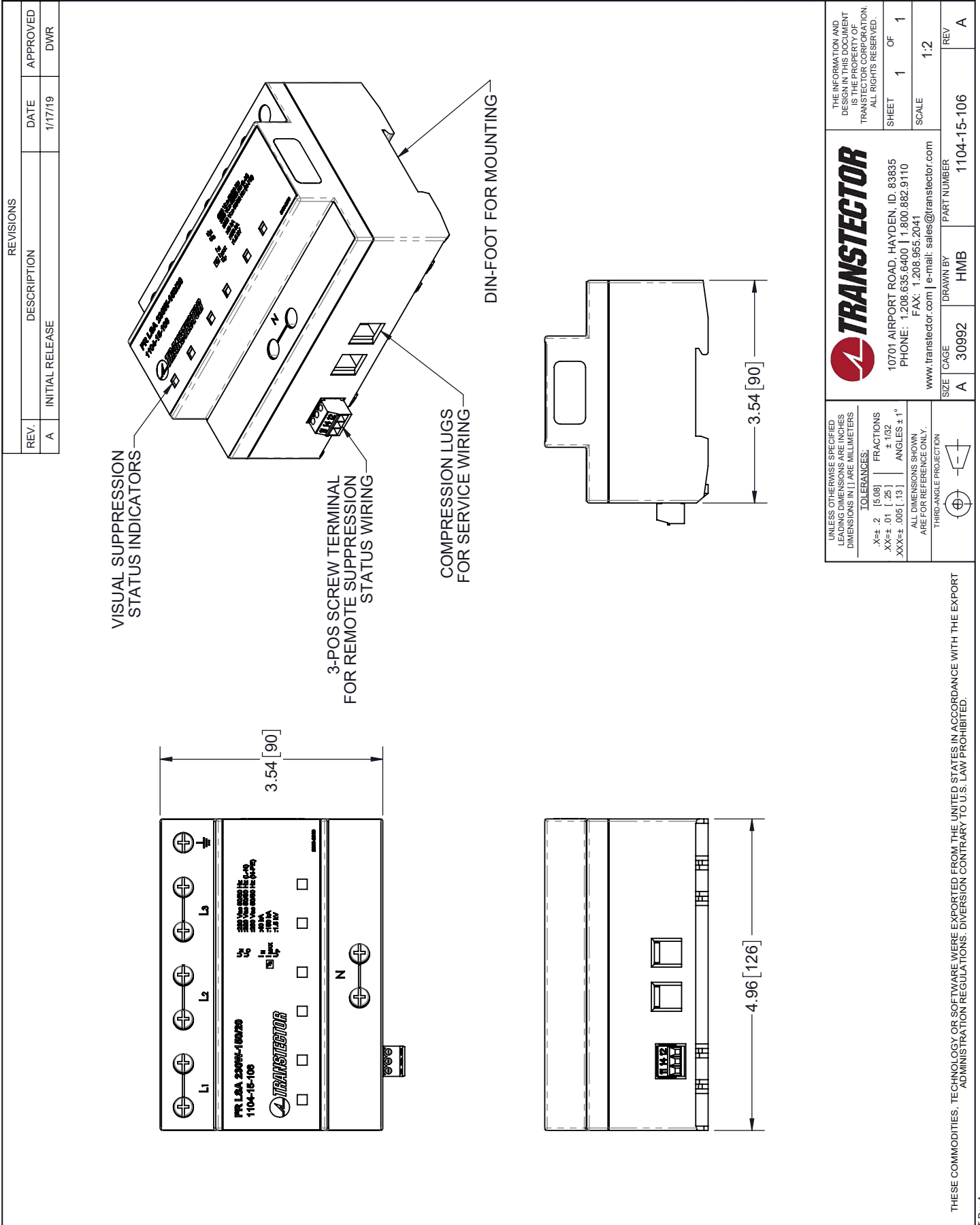
Transtector Systems specializes in protection of highly sensitive, low voltage equipment through its patented, non-degrading silicon diode technology and custom filters. Our power quality expertise translates into a diverse product offering including AC, DC, and signal applications as well as integrated cabinets, power distribution panels and EMP hardened devices.

Click the following link (or enter part number in "SEARCH" on website) to obtain additional part information including price, inventory and certifications: [AC Surge Protector SPD I2R DIN-Rail 230/400 Vac 3-Phase Wye 60 A MOV, GDT 150 kA 1104-15-106](https://www.transtector.com/ac-surge-protector-spd-i2r-din-rail-1104-15-106)

URL: <https://www.transtector.com/ac-surge-protector-spd-i2r-din-rail-1104-15-106-p.aspx>

The information contained in this document is accurate to the best of our knowledge and representative of the part described herein. It may be necessary to make modifications to the part and/or the documentation of the part, in order to implement improvements. Transtector reserves the right to make such changes as required. Unless otherwise stated, all specifications are nominal. Transtector does not make any representation or warranty regarding the suitability of the part described herein for any particular purpose, and Transtector does not assume any liability arising out of the use of any part or documentation.

1104-15-106 CAD Drawing



REVISIONS			
REV.	DESCRIPTION	DATE	APPROVED
A	INITIAL RELEASE	1/17/19	DWR

UNLESS OTHERWISE SPECIFIED LEADING DIMENSIONS ARE INCHES DIMENSIONS IN [ ] ARE MILLIMETERS TOLERANCES: .X±.2 [5.08] FRACTIONS ±.102 .XX±.01 [.25] ANGLES ±1° XXX±.005 [.13] ALL DIMENSIONS SHOWN ARE FOR REFERENCE ONLY. THIRD-ANGLE PROJECTION		THE INFORMATION AND DESIGN IN THIS DOCUMENT IS THE PROPERTY OF TRANSTECTOR CORPORATION. ALL RIGHTS RESERVED. SHEET 1 OF 1 SCALE 1:2	
TRANSTECTOR 10701 AIRPORT ROAD, HAYDEN, ID, 83835 PHONE: 1.208.635.6400   1.800.882.9110 FAX: 1.208.955.2041 www.transtector.com   e-mail: sales@transtector.com		DRAWN BY HMB PART NUMBER 1104-15-106	REV A
SIZE A CAGE 30992			

THESE COMMODITIES, TECHNOLOGY OR SOFTWARE WERE EXPORTED FROM THE UNITED STATES IN ACCORDANCE WITH THE EXPORT ADMINISTRATION REGULATIONS. DIVERSION CONTRARY TO U.S. LAW PROHIBITED.

T-Rev A