

Trimble TerraFlex Software

Key Features

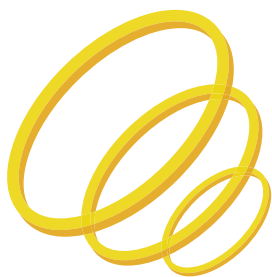
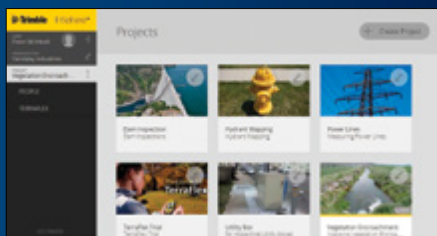
Fast, efficient geospatial data collection across a fleet of mixed devices

Keeps data organized, both in the field and office, using TerraFlex projects

Work anywhere with streamlined data management workflows

Easily import and update existing data for **up-to-the-minute information**

Integrated with Trimble InSphere for **access to multiple geospatial applications**



Start your free trial today!

www.trimbleinsphere.com/terraflex

Mobile Workflows You Can Trust

Trimble® TerraFlex™ software is a flexible and configurable cloud-based solution for field data collection and real-time updating of geospatial information. This robust application provides a full collection of digital forms so you can collect attribute rich and accurate geo-located GIS and asset information all in one workflow. It provides a valuable set of tools that work whether you are collecting street sign inventories, forest or environmental conditions, water system or utility assets. Available in two editions—Basic and Advanced— TerraFlex software makes sure your data is up-to-date and reliable.

Use Your Existing Devices

Remove the need to carry a GPS device, camera, clipboard, and printed maps by centralizing your data collection operations onto a single device. Supporting iOS, Android, Windows® Embedded Handheld, and selected tablet devices running Windows 7/Windows 8, you can work with the device of your choice—from a personal smartphone to high-accuracy handheld—and collect data in the same way.

Keep Your Data Organized

Create field collection projects that work for your team. TerraFlex offers flexibility to meet your organization's needs, by offering multiple form templates for an optimal form fulfillment workflow. With many field workers and numerous jobs to keep organized, field data collection assignments can be grouped into projects for assigning to individual team members, so you can rest assured information is collected and delivered in a consistent manner.

Update Existing Data

Ensure all project members are working with the most up-to-date data available with Trimble TerraFlex Advanced. With the Advanced edition, import pre-existing asset or GIS data into projects, make real-time updates in the field, and share that information across the project organization. You'll be able to see what issues your field crews are dealing with, and your field crews will have the information necessary to make timely and accurate decisions.

Keep in Sync—Save Time, Reduce Errors

Field data is automatically synced with a central server, streamlining office operations and driving higher productivity and cost savings. There is no need to return to the office to enter field data and no double-entry of information by re-typing paper forms. Project updates can be pushed to field crews and data sent back to the office in real-time, eliminating bottlenecks and ensuring crews are collecting the information you need. And because TerraFlex is fully functional offline, crews can work even in remote areas with data automatically syncing to the office when they're back in range.

Fully Managed, Streamlined Data Management

TerraFlex takes care of all the database administration and management, so you don't need to expend resources to manage another system. Focus on the job at hand without having to work backend systems. With spatial and data-oriented views, projects and incoming data are viewed the way you want to.

Quick Template Set Up and Versioning

Whatever your data collection needs, the drag and drop interface makes for efficient form template creation. Group and organize fields to create simple to navigate forms that allow for fast entry. As project needs adjust over time, data integrity is ensured as form templates can be edited and seamlessly rolled out to your team as project requirements change.

Equipped for Esri

TerraFlex works seamlessly with Esri by enabling you to easily move features and schemas between ArcMap and TerraFlex for a streamlined exchange of data. Plus, you can use free Esri basemap layers to create meaningful background maps for your projects.

As part of the Trimble InSphere™ software platform for central management of geospatial applications, data, and services, Trimble TerraFlex assures reliable geospatial data collection and data update for everyone.

רח' אודם 14, ת.ד. 7042 פ"ת 70 ▪ 03-9243352 :טל ▪ 03-9243358 :פקס

www.hypertech.co.il ▪ sales@hypertech.co.il



Technical Specifications

Feature	TerraFlex Basic	TerraFlex Advanced
Data Collection		
Point, line, polygon	X	X
Field types:		
– Numeric (standard numeric input plus measurements fields):	X	X
◇ Length – Imperial and metric	X	X
◇ Angles – Degrees	X	X
– Text	X	X
– Date	X	X
– Selection field:		
◇ Single Choice/Radio button	X	X
◇ Multiple Choice/Checkbox	X	X
– Boolean/Yes/No	X	X
– Signature	X	X
– Images	X	X
– Conditional fields	X	X
– Advanced conditional fields		X
– Metadata fields (user, device, GNSS, etc.)	X	X
– Accuracy based logging		X
– Position required for logging	X	X
Import		
Esri XML schema	X	X
Shapefile		X
Export		
KML/KMZ	X	X
CSV	X	X
Esri File Geodatabase	X	X
Shapefile	X	X
WFS	X	X
Real Time Correction		
Trimble Geo 7 and Geo 6000 series handhelds including integrated laser rangefinder support	X	X
Trimble Juno® 5 and 3 series handhelds	X	X
Trimble Yuma® 2 and Motion tablets	X	X
Trimble Nomad® 1050 series handhelds	X	X
Trimble R1 GNSS receiver	X	X
Trimble R2 GNSS receiver	X	X
Internet (VRS, single base), SBAS, external receiver	X	X
Trimble RTX™ services	X	X

Feature	TerraFlex Basic	TerraFlex Advanced
Background Maps		
Google Maps and Imagery (field and office)	X	X
Esri Basemaps (office)	X	X
Offline Basemaps Powered by Trimble Data	X	X
Data Updates		
Import existing data from shapefiles		X
Create field collection templates from existing attribute tables/layers		X
Create tasks:		
– Show task progress in field		X
– Show task progress in office		X
Push existing data to field users		X
Update geometries by field users		X
Update attributes by field users		X
Update attributes by office users		X
Navigate to feature		X
System Requirements		
Mobile:		
– Android 4.x or later	X	X
– iOS 7 or later	X	X
– Windows 7 / Windows 8	X	X
– Windows Embedded Handheld 6.5 or later	X	X
– Supported GNSS receivers		
◇ Trimble Pro 6H and 6T receivers	X	X
◇ Trimble R1 GNSS receiver	X	X
◇ Trimble R2 GNSS receiver	X	X
Cloud Service:		
– Internet Explorer 11 or later	X	X
– Firefox	X	X
– Chrome		
Available Languages		
English	X	X
French	X	X
German	X	X
Spanish (Latin America)	X	X

© 2014–2015, Trimble Navigation Limited. All rights reserved. Trimble, the Globe & Triangle logo, GPS Pathfinder, Juno, Nomad and Yuma are trademarks of Trimble Navigation Limited, registered in the United States and in other countries. InSphere, RTX and TerraFlex are trademarks of Trimble Navigation Limited. Windows is either a registered trademark or trademark of Microsoft Corporation in the United States and/or other countries. All other trademarks are the property of their respective owners. PN 022516-125D (09/15)



TRIMBLE AUTHORIZED DISTRIBUTION PARTNER



רח' אודם 14, ת.ד. 7042 פ"ת • טל: 03-9243352 • פקס: 03-9243358

www.hypertech.co.il • sales@hypertech.co.il

